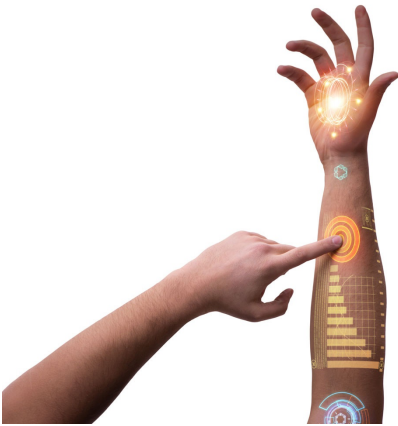


## E-HEALTH - Wireless power and sensors for medical devices



Sensor integration and long-term operation are main aspects of e-health solutions. We offer research and development of sensor and actuator solutions based on flexible biocompatible materials and high end electronics for contactless power supply.

This includes miniaturized monitoring solutions for respiration, ECG, movement or contactless supply of implants or charging of medical devices. We develop your customized monitoring system from the sensor to electronics to AI processing.